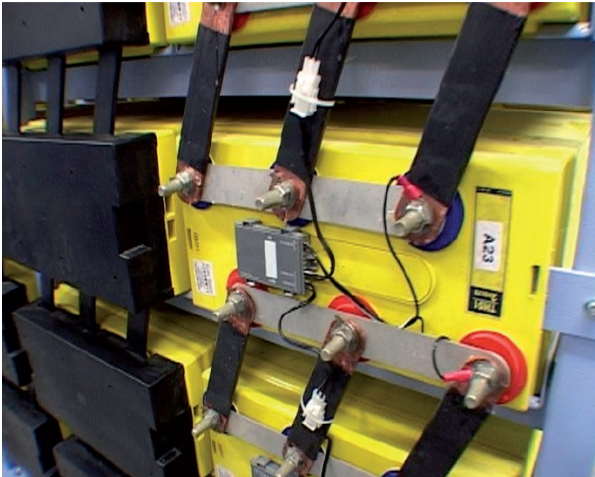


# CellSure™ Battery Monitoring and Fault Diagnosis



## Features

- Early warning of potential failures
- Reserve Time remaining on Discharge
- Accurate battery capacity and state-of-health measurements
- Patented software algorithm
- Cost effective for network wide deployment
- Remote communications options
- Graphical data displays
- Data export capability
- Real-time monitoring and alarms
- Modular and expandable
- Easy to install and operate
- Remote Battery Testing (with PowerManagerII™ software)

When there's a power failure there is only one thing between your network never missing a beat and an outage – the battery. Batteries tend to be the forgotten safety net. Rarely needed, they sit quietly waiting to do their job.

However, when they are called to action will they be ready?

A battery monitoring system is the best way to keep track of a battery's condition and to highlight ahead of time if any maintenance is needed.

But until now the hardware requirements, and the need for regular site visits to setup and run a monitoring system, have made this an expensive option.

Now there's the Eaton® CellSure battery monitoring and fault diagnosis system.

CellSure provides a method to report on batteries, showing where problems may occur and giving the most important information - reliable battery capacity measurements in real time.

# Technical Specifications

---

## System configurations

Nominal system voltages	24V or 48V
Battery strings per system	1-4 strings
Cell/monobloc voltage	2V, 6V or 12V
Battery types	VRLA (standard) or flooded cells (on request)

## Alarms and Indicators

Controller module indicators	Status LED, 4 String Alarm LEDs
Controller module alarms	Voltage free relay contacts (Urgent and Non-urgent)

## Inputs

Cell/monobloc voltage	±0.5% accuracy
String current	±1% accuracy
Ambient temperature	±1°C accuracy
String temperature	±1°C accuracy

## Data Output

Alarm conditions	Cell/monobloc voltage low, Cell/monobloc divergence, Discharge voltage low, String temperature, String overcharge, Low capacity, Low charge.
Measured values	Actual capacity, Reserve charge, Reserve time, "State of Health"
Data	Weekly log: 7day x 24hour cell/monobloc data Yearly log: 365day cell/monobloc data (averaged) Last two partial discharges. Last full discharge.

## Certifications

All products comply with International Standards. Contact your local Eaton DC representative for details on the specific product versions available with these safety and EMC approvals:

North America	UL, FCC Verification
Canada	IC
Europe	CE
Australia / New Zealand	C-tick

In the interests of continual product improvement all specifications are subject to change without notice.



Eaton, CellSure, SiteSure, DCTools and PowerManager are trade names, trademarks, and/or service marks of Eaton Corporation or its subsidiaries and affiliates. All other trademarks are property of their respective owners.